



S

Cambridge YLE: Starters Reading & Writing

This worksheet includes activities to practise for Cambridge Young Learners English: Reading & Writing.

S

1 Read. Put a tick (✓) or a cross (✗) in the box.

Yes No

A This is a bucket.



B This is a boy.



C This is a chair.



D This is a wave.



E This is a square.



F This is a triangle.



G These are friends.



H These are hearts.



2 Complete the sentences.

A Ermy and Pat are at the beach. They arehappy..... . (a p h y p)

B Ermy is in the sea. She can see fish and fish. (i b g) (l m a s l)

C Pat can't find Ermy. He is (d s a)

D It's night. The sea is and (d o c l) (k d r a)

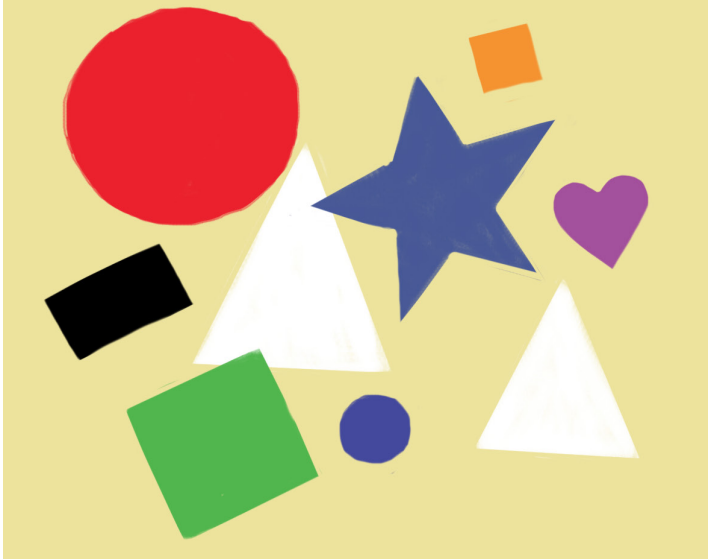
E Ermy is on her own in the sea. She's (d r e c s a)

F Ermy is back home with Pat. She is (f e a s)



S 3 Read the sentences. Write Picture A or Picture B.

Picture A



Picture B



- A There is one square.
- B There are four triangles.
- C There is a purple heart.
- D There isn't a rectangle.
- E There are two white triangles.

Picture A

.....
.....
.....
.....

S 4 Look at the pictures. Complete these sentences.



- A There's a **small** red in Picture B.
- B There are four in Picture
- C There's a purple in Picture
- D There a star
- E There isn't a in Picture B.
- F in Picture A.



5 Story Quiz

- A What is Ermy? **a fish**
- B What colour is Ermy?
- C Where do Pat and Ermy go?
- D What can Ermy smell?
- E What colour is the bucket?
- F Is Pat in the bucket?
- G Where is Pat's sandcastle?
- H What can Ermy see in the sea?

6 Circle the correct words.



- A Pat and Ermy **can** / **can't** see the sea.



- B Ermy **can** / **can't** smell the sea.
- C She **can** / **can't** hear the sea.
- D She **can** / **can't** see the sea.



- E Ermy **can** / **can't** see lots of fish.
- F She **can** / **can't** see lots of shapes and colours.



- G Pat **can** / **can't** find Ermy